

**SAMSUNG IREX**



Furniture Fittings  
& Hardware

# Lookbook



ENGINEERED IN KOREA

BIS Certified



# HINGES

Engineered with cutting-edge technology and premium materials, our hinges offer unmatched durability and smooth functionality, ensuring silent, effortless opening and closing of doors and cabinets.





# Every **hinge** you'll ever need.

Designed with precision and premium materials, our hinges provide smooth motion, reliable performance, and lasting durability for modern cabinets.



**975 SERIES**  
SEON HINGE



**575 SERIES**  
SOFT-CLOSING HINGE



**775 SERIES**  
SOFT-CLOSING HINGE



**THICK DOOR**  
SOFT-CLOSE HINGE



**855 SERIES**  
SOFT-CLOSE HINGE



**595 SERIES**  
90 BLIND CORNER HINGE



**PROFILE HINGE**



**575 SERIES**  
STAINLESS STEEL HINGE



**375 SERIES**  
3D ERGONOMICAL HINGE



**1775DSHN/OSD**  
SOFT-CLOSING DAMPER  
INTEGRATED HINGE



**550 SERIES**  
SLIDE ON HINGE



**570 SERIES**  
CLIP ON HINGE

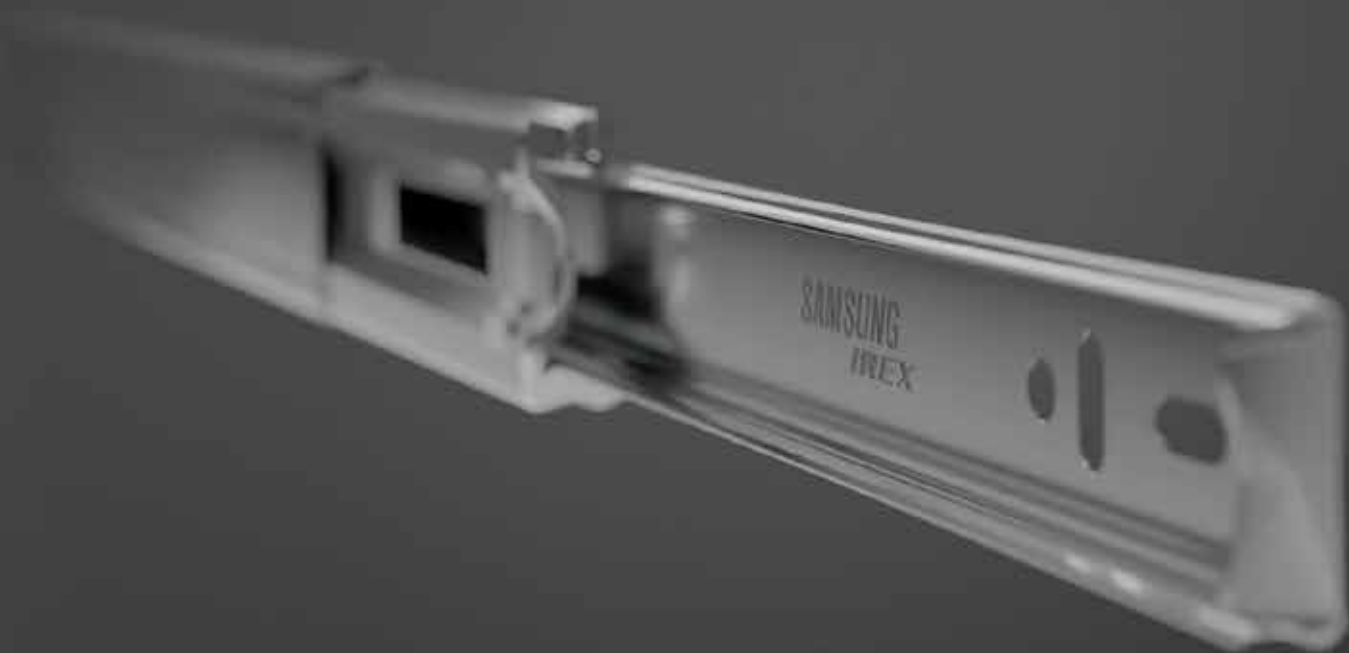


**135 SERIES**  
PIE CUT HINGE

# BALL BEARING SLIDE

Designed with precision engineering and advanced technology, these slides ensure seamless, smooth, and silent drawer movement – a must-have for modern kitchens, wardrobes, and workspaces.





# Smooth **slides** for every drawer.

Crafted with precision ball bearing technology, our slides offer smooth, stable drawer movement and dependable durability for modern cabinetry solutions.



**ZINC FINISH**  
35 KG



**ZINC FINISH**  
45 KG



**BLACK FINISH**  
35 KG



**BLACK FINISH**  
45 KG



**DAMPING**  
35 KG



**PUSH TO OPEN**  
30 KG

# UNDER RAIL

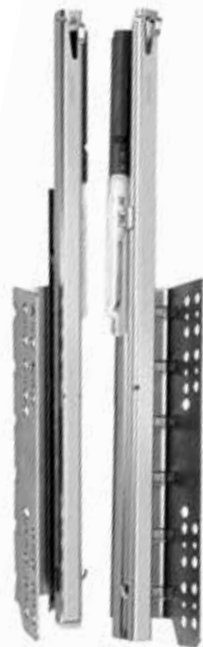
A hidden sliding mechanism that maximizes drawer storage space and enhances the overall aesthetic. Perfect for premium kitchens, wardrobes, and office spaces, these systems combine superior performance with understated elegance.





# Smooth performance for every drawer.

Designed with precision under-mount technology, our drawer systems ensure seamless motion, enhanced stability, and dependable performance.



PART EXTENSION



FULL EXTENSION

# DRAWER SYSTEM- HANA SERIES

A soft close integrated mechanism which helps the drawer to close in a soft manner ensuring soundless operations. The mechanism is based upon rack and pinion along with ball bearing mechanism, which ensures smooth opening and closing of drawer.





# Smart **drawer** **systems** for modern living.

Engineered with advanced soft-close technology, the HANA series delivers smooth drawer movement, enhanced stability, and reliable performance for modern cabinetry.



HANA CUBE J- 88mm



HANA CUBE H- 120mm



HANA CUBE D- 175mm



HANA CUBE S- 272mm

# DRAWER SYSTEM- IREX SERIES

A soft close integrated mechanism which helps the drawer to close in a soft manner ensuring soundless operations. The mechanism is based upon rack and pinion along with ball bearing mechanism, which ensures smooth opening and closing of drawer.





# Engineered **drawer systems** for modern cabinetry.

Built with advanced drawer system technology, the IREX series provides smooth motion, strong load capacity, and long-lasting durability.



IREX CUBE J- 83mm



IREX CUBE H- 115mm



IREX CUBE D- 172mm



IREX CUBE S- 204mm

# PVC CUTLERY

A perfect fit for modern kitchens. They're easy to clean, resistant to stains, and built to withstand daily use – ensuring your kitchen stays as functional as it is beautiful.





# Smart **cutlery** organization for every drawer.

Built with high-quality PVC material, our cutlery trays deliver smart organization, durability, and practical functionality for modern kitchen storage.



450MM



500MM



600MM



700MM



800MM



900MM

# WIRE BASKETS

Designed to organise cups, saucers, thalis, and other essentials. These stainless steel wire racks offer easy access, clutter-free storage, and a sleek, modern look. Perfect for Indian kitchens, they help keep your crockery neatly arranged while enhancing kitchen efficiency and aesthetics.





# Efficient **wire** **baskets** for every cabinet.

Built with high-quality wire materials, our baskets deliver practical storage solutions, smooth functionality, and long-lasting durability for modern kitchens.



**MULTIPURPOSE**  
BASKET



**THALI**  
BASKET



**CUP & SAUCER**  
BASKET



**PLATE**  
BASKET



**VEGETABLE**  
BASKET



**PERFORATED CUTLERY**  
BASKET



**3/4TH WIRE**  
CAROUSEL



**GRAIN**  
TROLLEY



**GRAIN TROLLEY**  
WITH S/C UD RAIL MECHANISM



**GRAIN TROLLEY**  
WITHOUT FRAME



**WIRE BOTTLE**  
PULL OUT



**MASALA**  
PULL OUT



**CYLINDER**  
TROLLEY



**DETERGENT**  
HOLDER



**BIN**  
HOLDER

# KUM SERIES

Inspired by the Korean word “KUM,” meaning Gold, the KUM Series represents a refined and value-engineered range of storage solutions. Designed for modern kitchens and wardrobes, it includes bottle pull-outs, pantry units, and corner solutions that combine functionality with elegant aesthetics.





# Smart **pantry** **storage** for every kitchen.

Designed with durable materials and smart storage tiers, our KUM series ensures organized pantry storage, easy access, and efficient use of kitchen cabinets.



**GLASS BOTTLE**  
PULL OUT



**TANDEM BOTTLE**  
PULL OUT



**GLASS PANTRY**  
PULL OUT



**TANDEM PANTRY**  
PULL OUT



**SWING**  
TRAY



**MAGIC**  
CORNER

# BAEKUM SERIES

Derived from the Korean word “Baekum,” meaning Platinum, the Baekum Series represents our premium range of advanced storage solutions. With thoughtfully engineered designs, the Baekum Series ensures enhanced organization and effortless accessibility.





# Premium **pantry** storage for modern kitchens.

Engineered with premium stainless steel construction, the Baekum series offers elegant storage solutions, smooth accessibility, and long-lasting performance.



**STAINLESS STEEL**  
DISH RACK



**DIAMOND PANTRY**  
PULL OUT



**PREMIUM BOTTLE**  
PULL OUT



**MASEOLI TRAY**  
SOFT CLOSE



**MASEOLI MAGIC**  
SOFT CLOSE



**PLATE**  
RACK



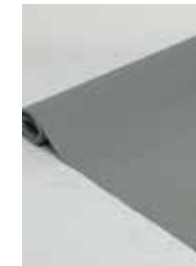
**S S**  
CUTLERY



**PULL OUT**  
WASTE BIN



**SWING**  
TRAY



**ECOMAT**

# ROLLING SHUTTER

Designed to bring functionality and elegance to modern kitchens and workspaces. These shutters offer smooth, space-saving operation that blends seamlessly with contemporary cabinetry. Engineered for durability, ease of use, and a refined modern look, rolling shutters provide an organized and stylish storage solution for today's interiors.





# Elegant **shutter** **systems** for modern kitchens.

Engineered for modern cabinetry, our rolling shutters offer smooth vertical movement, space-efficient storage, and elegant functionality.



**GLASS**  
FROSTED



**GLASS**  
BLACK



**GLASS**  
WHITE



**PVC**  
GREY



**PVC**  
SILVER

# OSJANG SERIES

Designed to maximize space and simplify your daily routine. Our accessories are built with durable materials and innovative designs that complement the modern lifestyle.





# Organized wardrobe systems for modern lifestyles.

Engineered for modern wardrobes, the Osjang series delivers smart storage solutions, smooth accessibility, and practical organization for everyday use.



**JEWELLERY BOX**



**TROUSER RACK**



**RATTAN STORAGE BASKET**



**SHOE RACK**



**WARDROBE LIFT**



**REVOLVING SHOE RACK**



**DIGITAL LOCKER**



**PUSH TO OPEN**



**SQUARE WARDROBE TUBE**



**OVAL TUBE**



**OVAL WALL TO WALL SUPPORT-ECO CP**



**OVAL WALL TO WALL SUPPORT-STANDARD CP**



**OVAL WALL TO WALL SUPPORT-PREMIUM CP**



**OVAL END TOP SUPPORT CP**



**OVAL CENTER SUPPORT CP**



**OVAL SUPPORT TWO WAY CP**



**RECTANGULAR WARDROBE TUBE**



**RECTANGULAR SUPPORT WALL TO WALL PREMIUM**



**RECTANGULAR END TOP SUPPORT**



**RECTANGULAR CENTER WARDROBE**



**RECTANGULAR TWO WAY SUPPORT**

# POCKET SLIDE

Designed for smooth and space-saving functionality, Slides ensure effortless drawer movement with a sleek, concealed mechanism. Engineered for durability and precision, they provide stable performance, easy installation, and a clean aesthetic, making them the perfect choice for modern furniture solutions.





# Space-saving **pocket slide** solutions for modern cabinetry.

Designed for modern cabinetry, pocket slide systems provide smooth door movement, concealed storage, and efficient space utilization.



**POCKET**  
SLIDE

# LIFT-UP FITTINGS

Designed for smooth, space-efficient overhead storage, enable effortless upward opening with a controlled folding motion. Engineered with adjustable force and opening angles, they ensure stable performance across varying door sizes and weights. The precision-built mechanism delivers quiet, balanced movement, easy installation, and long-term durability, making it an ideal solution for modern modular kitchens and overhead cabinets.





# Smart **lift-up** solutions for modern cabinetry.

Engineered with advanced lift-up technology, our fittings ensure smooth upward door movement, stable performance, and effortless access to overhead cabinets.



**BI-FOLD**  
LIFT UP

# ALUMINIUM PROFILE

Crafted with precision engineering, our aluminium profiles offer the perfect balance of strength, lightweight performance, and corrosion resistance. Designed for versatile applications in modern furniture and interiors, they ensure seamless integration, refined aesthetics, and long-lasting durability for contemporary cabinetry and architectural solutions.

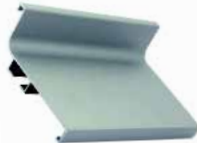


# Precision aluminium profiles for modern interiors.

Crafted with precision engineering, our aluminium profiles provide strength, durability, and a sleek modern finish for contemporary wardrobes and interiors.



**F**  
PROFILE



**J GOLA**  
PROFILE



**C GOLA**  
PROFILE



**L**  
PROFILE



**22 MM**  
FRAME



**22 MM**  
F HANDLE



**G**  
PROFILE



**45 MM**  
FRAME



**45 MM**  
L Handle



**50 MM**  
FRAME



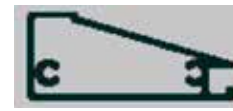
**50 MM**  
I HANDLE



**45 MM**  
I HANDLE



**J**  
PROFILE



**55 MM CURVED**  
FRAME PROFILE



**HANDLE FOR 55 MM**  
CURVED FRAME PROFILE



**FRAME PROFILE**  
CONNECTOR



**GOLA PROFILE**  
CONNECTOR



**22 MM PROFILE**  
CONNECTOR

# INTERNAL ACCESSORIES

Designed to enhance organization and functionality, our internal accessories bring efficiency and elegance to modern kitchens, wardrobes, and living spaces. Thoughtfully engineered with innovative design and superior quality, each accessory ensures seamless storage, easy accessibility, and long-lasting durability, helping your spaces remain organized, stylish, and practical for years to come.



# Functional **internal accessories** for organized spaces.

Crafted with durable materials and intelligent design, our internal accessories enhance organization, accessibility, and efficiency in modern living spaces.



**SINGLE CROSS**  
RAIL CONNECTION



**DIVIDER**  
RAIL CONNECTION



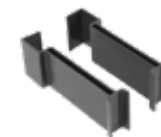
**HORIZONTAL**  
RAIL



**VERTICAL**  
RAIL



**GLASS SIDE FRONT**  
CONNECTOR CLIP



**GLASS SIDE**  
ADAPTER FRONT-GALLERY



**GLASS SIDE**  
ADAPTER BACK-GALLERY



**GLASS SIDE**  
ADAPTER FRONT-  
DOUBLE GALLERY



**GLASS SIDE**  
ADAPTER BACK-  
DOUBLE GALLERY



**FRONT GLASS**  
BRACKET-DOUBLE  
GALLERY



**ALUMINIUM FRONT**  
HANDLE PROFILE 1100 MM



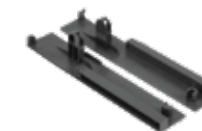
**SQUARE ROD**  
FRONT HANDLE 1100 MM



**FRONT BRACKET**  
NORMAL DRAWER



**FRONT BRACKET**  
SINGLE GALLERY DRAWER



**FRONT BRACKET**  
DOUBLE GALLERY DRAWER

# Essential hardware solutions for modern interiors.

Crafted with durable materials and intelligent design, our internal accessories enhance organization, accessibility, and efficiency in modern living spaces.



**BUTT HINGES**  
WITH BEARING



**BUTT HINGES**  
WITHOUT BEARING



**BED**  
FITTING



**DRYWALL**  
SCREW



**MULTIPURPOSE**  
LOCK



**WARDROBE**  
LOCK



**MAGNETIC**  
CATCHER



**CHIPBOARD**  
SCREW



**SHELF**  
SUPPORT



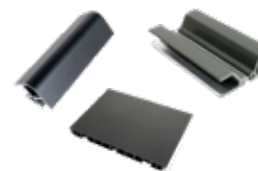
**PVC**  
LEG



**CONNECTING**  
FITTINGS



**GAS SHOCK**  
ABSORBER



**PLINTH-**  
BLACK



**PLINTH-**  
SILVER

# Smart sliding solutions for modern interiors.

Crafted with durable materials and intelligent design, our internal accessories enhance organization, accessibility, and efficiency in modern living spaces.



**DOUBLE TRACK**  
SLIDING

**DOUBLE TRACK**  
SLIDING KIT

**SLIDING PROFILE**  
TOP 2.4M - MATT

**SLIDING PROFILE**  
BOTTOM 2.4M - MATT

**SLIDING PROFILE**  
COVER 2.4M - MATT

**SLIDING PROFILE**  
TOP 2.4M - MATT BLACK

**SLIDING PROFILE**  
BOTTOM 2.4M - MATT BLACK

**SLIDING PROFILE**  
COVER 2.4M - MATT BLACK

**SLIDING PROFILE**  
TOP 4M - MATT

**SLIDING PROFILE**  
BOTTOM 4M - MATT

**SLIDING PROFILE**  
COVER 4M - MATT

**SLIDING PROFILE**  
TOP 4M - MATT BLACK

**SLIDING PROFILE**  
BOTTOM 4M - MATT BLACK

**SLIDING PROFILE**  
COVER 4M - MATT BLACK



**PLUTO DAMPING**  
SLIDING ( 2 DOORS )

**PLUTO DAMPING**  
SLIDING ( 3 DOORS )

**BOTTOM RAIL**  
PROFILE - 3 MM

**FRONT TOP RAIL**  
PROFILE - 3 MM

**HANDLE BAR**  
PROFILE - 2.4 M

**SIDE BAR**  
PROFILE - 2.4 M

**HORIZONTAL H-BAR**  
PROFILE - 1.2 M

**HORIZONTAL T-BAR**  
PROFILE - 1.2 M

**HORIZONTAL L-BAR**  
PROFILE - 1.2 M

**CAP FOR**  
HANDLE BAR

**CAP FOR**  
SIDE BAR



**UPPER**  
RUNNER



**ALLEN**  
KEY



**UPPER**  
RAIL



**SPACER**

**DAMPER**



**DOWN**  
RUNNER



**ST4X14 CROSS**  
RECESSED PAN HEAD  
TAPPING SCREW



**DOWN**  
RAIL



**DOWN**  
RAIL COVER



# One of the Leading Manufacturers of Premium Furniture Fitting Hardware.

with 45+ years of legacy.



## Connect with us

 /samsung.irex

 1800 1204 920

 [samsungirexindia.com](http://samsungirexindia.com)

 [care@samsungirexindia.com](mailto:care@samsungirexindia.com)

## Global HQ

### **Samsung Precision Ind. Co. Ltd.**

Incheon, Seoul, South Korea 167, Bongsu-daero, Seo-gu Incheon-Seoul,  
South Korea

## India

### **Samsung Irex India LLP**

F-02, Unit 11 & 12, Emaar- The Palm Square, Golf Course Extension Road  
Gurugram, Haryana - 122101

### **Warehouse**

#### **Samsung Irex India LLP**

Shed No. 4, DRS Warehousing, Village: Khijuri,  
NH – 48, Tehsil: Dharuhera; District: Rewari, Haryana - 123401

### **Display Center**

Amritsar | Bangalore | Delhi | Deoria | Faridabad | Gurugram | Guwahati |  
Hyderabad | Kathua | Katni | Lucknow | Noida | Patiala | Ranchi

## UAE

Amigos Aesthetic Building Materials Trading LLC Dubai Investment  
Park 2 Plot no. 597-4232, P. O. Box 299842, Dubai

The fitting situations shown in this catalogue are only intended to illustrate the possible options.

The furniture manufacturer is responsible for ensuring that furniture is designed in compliance with standards, in particular with regard to meeting the requirements on safety.

We will be pleased to provide any further information you may require.

We reserve all rights to this catalogue under copyright law. It shall not be permissible to duplicate this catalogue in any form either in whole or in part without our written consent. Subject to technical alterations. Errors and omissions excepted. Subject to colour variations.