



Furniture Fittings & Hardware **Lookbook**

 ENGINEERED IN KOREA

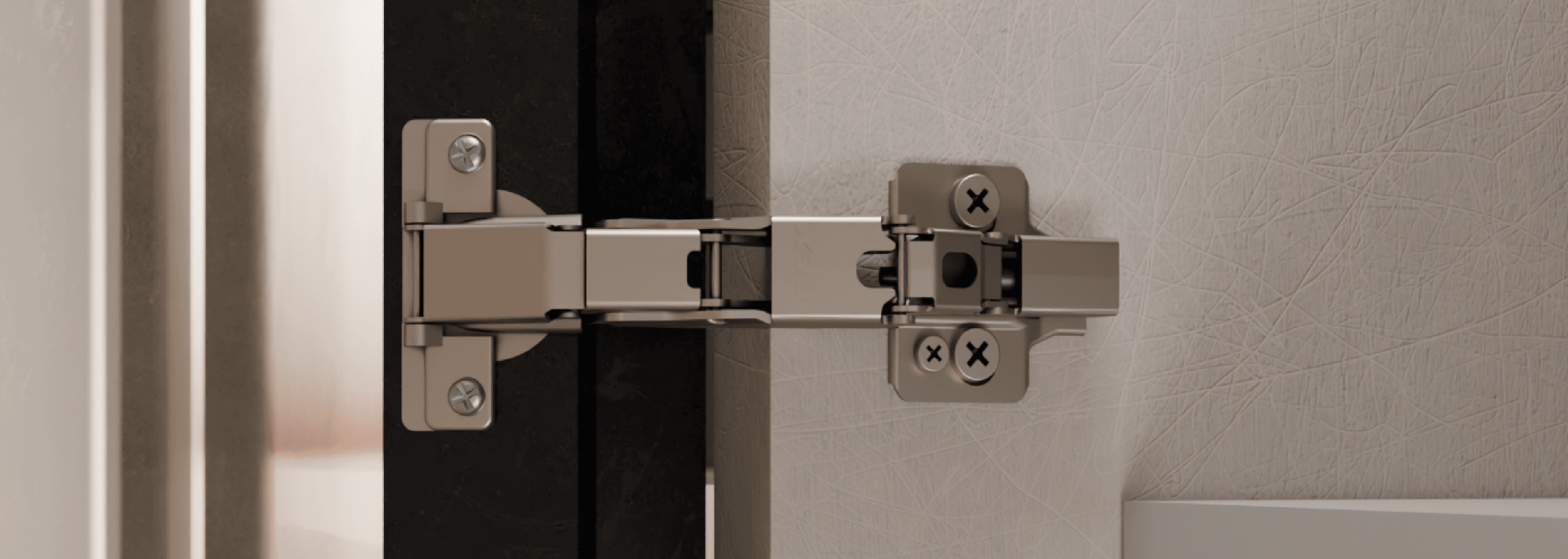
BIS Certified



HINGES

Engineered with cutting-edge technology and premium materials, our hinges offer unmatched durability and smooth functionality, ensuring silent, effortless opening and closing of doors and cabinets.





Every **hinge** you'll ever need.

Designed with precision and premium materials, our hinges provide smooth motion, reliable performance, and lasting durability for modern cabinets.



975 SERIES
SEON HINGE



575 SERIES
SOFT-CLOSING HINGE



775 SERIES
SOFT-CLOSING HINGE



THICK DOOR
SOFT-CLOSE HINGE



855 SERIES
SOFT-CLOSE HINGE



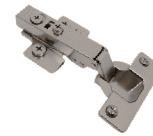
595 SERIES
90 BLIND CORNER HINGE



PROFILE HINGE



575 SERIES
STAINLESS STEEL HINGE



375 SERIES
3D ERGONOMICAL HINGE



1775DSHN/OSD
SOFT-CLOSING DAMPER
INTEGRATED HINGE



550 SERIES
SLIDE ON HINGE



570 SERIES
CLIP ON HINGE

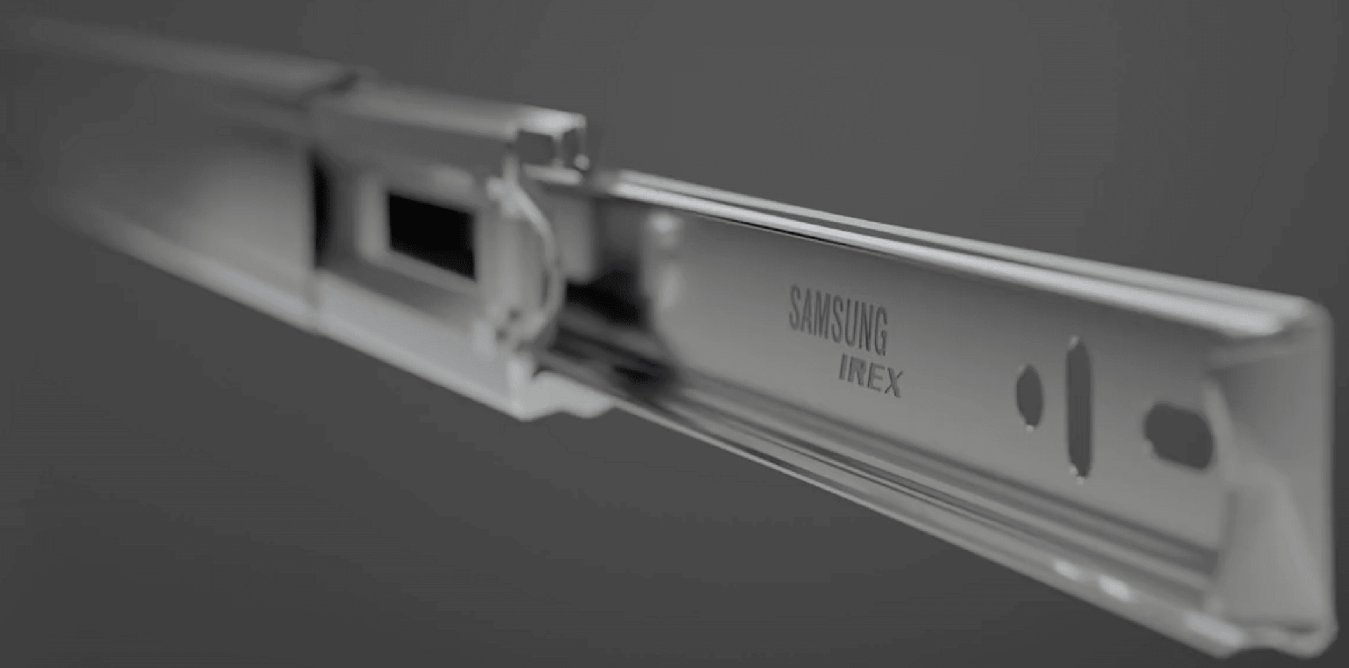


135 SERIES
PIE CUT HINGE

BALL BEARING SLIDE

Designed with precision engineering and advanced technology, these slides ensure seamless, smooth, and silent drawer movement – a must-have for modern kitchens, wardrobes, and workspaces.





Smooth **slides** for every drawer.

Crafted with precision ball bearing technology, our slides offer smooth, stable drawer movement and dependable durability for modern cabinetry solutions.



ZINC FINISH
35 KG



ZINC FINISH
45 KG



BLACK FINISH
35 KG



BLACK FINISH
45 KG



DAMPING
35 KG



PUSH TO OPEN
30 KG

UNDER RAIL

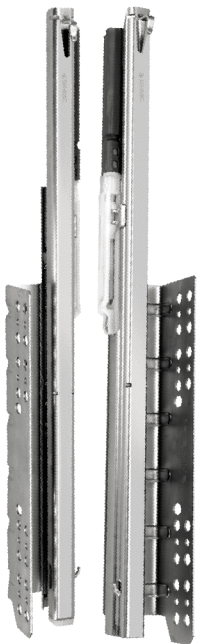
A hidden sliding mechanism that maximizes drawer storage space and enhances the overall aesthetic. Perfect for premium kitchens, wardrobes, and office spaces, these systems combine superior performance with understated elegance.



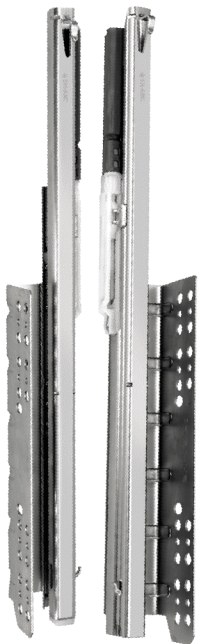


Smooth performance for every drawer.

Designed with precision under-mount technology, our drawer systems ensure seamless motion, enhanced stability, and dependable performance.



PART EXTENSION



FULL EXTENSION

DRAWER SYSTEM- HANA SERIES

A soft close integrated mechanism which helps the drawer to close in a soft manner ensuring soundless operations. The mechanism is based upon rack and pinion along with ball bearing mechanism, which ensures smooth opening and closing of drawer.





Smart **drawer** **systems** for modern living.

Engineered with advanced soft-close technology, the HANA series delivers smooth drawer movement, enhanced stability, and reliable performance for modern cabinetry.



HANA CUBE J- 88mm



HANA CUBE H- 120mm



HANA CUBE D- 175mm



HANA CUBE S- 272mm

DRAWER SYSTEM- IREX SERIES

A soft close integrated mechanism which helps the drawer to close in a soft manner ensuring soundless operations. The mechanism is based upon rack and pinion along with ball bearing mechanism, which ensures smooth opening and closing of drawer.





Engineered **drawer systems** for modern cabinetry.

Built with advanced drawer system technology, the IREX series provides smooth motion, strong load capacity, and long-lasting durability.



IREX CUBE J- 83mm



IREX CUBE H- 115mm



IREX CUBE D- 172mm



IREX CUBE S- 204mm

PVC CUTLERY

A perfect fit for modern kitchens. They're easy to clean, resistant to stains, and built to withstand daily use – ensuring your kitchen stays as functional as it is beautiful.





Smart **cutlery** organization for every drawer.

Built with high-quality PVC material, our cutlery trays deliver smart organization, durability, and practical functionality for modern kitchen storage.



450MM



500MM



600MM



700MM



800MM

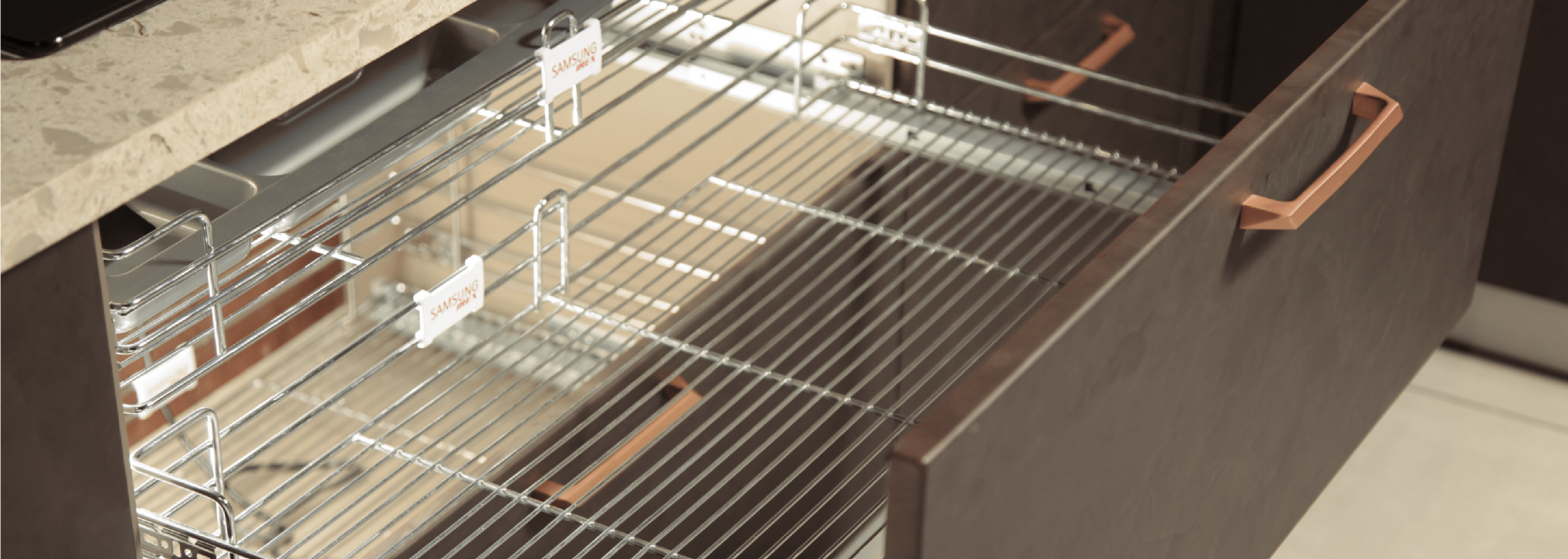


900MM

WIRE BASKETS

Designed to organise cups, saucers, thalis, and other essentials. These stainless steel wire racks offer easy access, clutter-free storage, and a sleek, modern look. Perfect for Indian kitchens, they help keep your crockery neatly arranged while enhancing kitchen efficiency and aesthetics.





Efficient **wire** **baskets** for every cabinet.

Built with high-quality wire materials, our baskets deliver practical storage solutions, smooth functionality, and long-lasting durability for modern kitchens.



MULTIPURPOSE
BASKET



THALI
BASKET



CUP & SAUCER
BASKET



PLATE
BASKET



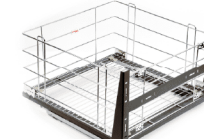
VEGETABLE
BASKET



PERFORATED CUTLERY
BASKET



3/4TH WIRE
CAROUSEL



GRAIN
TROLLEY



GRAIN TROLLEY
WITH S/C UD RAIL MECHANISM



GRAIN TROLLEY
WITHOUT FRAME



WIRE BOTTLE
PULL OUT



MASALA
PULL OUT



CYLINDER
TROLLEY



DETERGENT
HOLDER

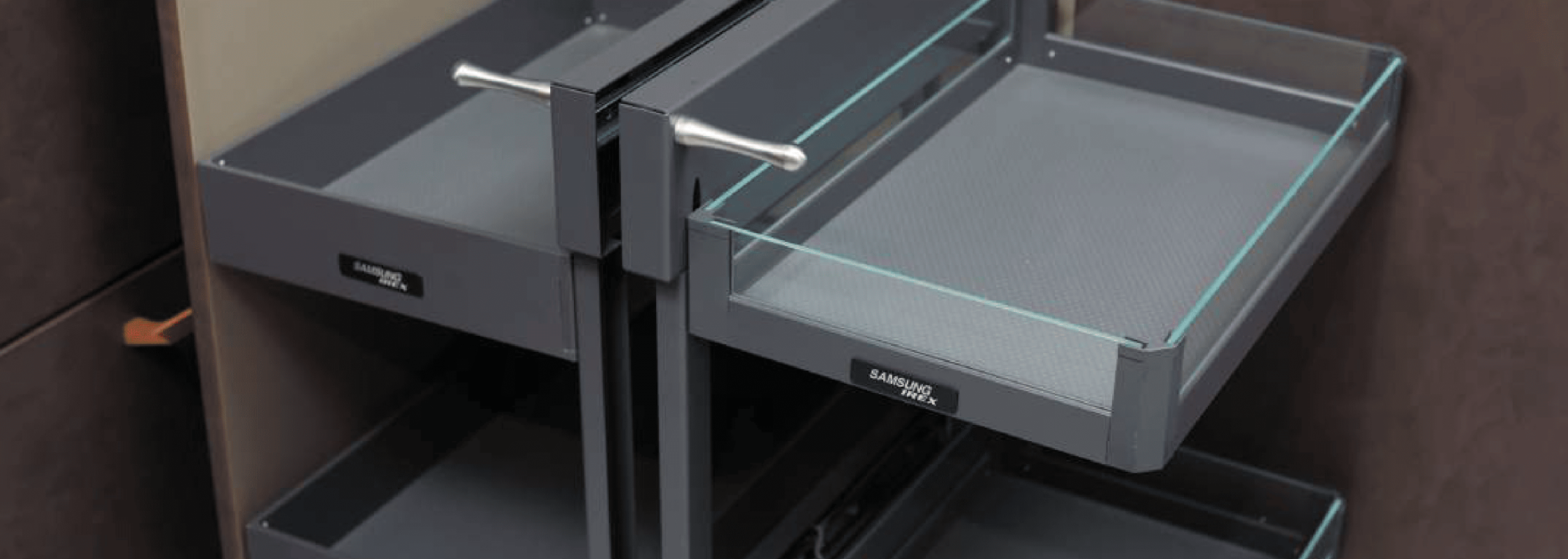


BIN
HOLDER

KUM SERIES

Inspired by the Korean word “KUM,” meaning Gold, the KUM Series represents a refined and value-engineered range of storage solutions. Designed for modern kitchens and wardrobes, it includes bottle pull-outs, pantry units, and corner solutions that combine functionality with elegant aesthetics.





Smart **pantry** **storage** for every kitchen.

Designed with durable materials and smart storage tiers, our KUM series ensures organized pantry storage, easy access, and efficient use of kitchen cabinets.



GLASS BOTTLE
PULL OUT



TANDEM BOTTLE
PULL OUT



GLASS PANTRY
PULL OUT



TANDEM PANTRY
PULL OUT



SWING
TRAY



MAGIC
CORNER

BAEKUM SERIES

Derived from the Korean word “Baekum,” meaning Platinum, the Baekum Series represents our premium range of advanced storage solutions. With thoughtfully engineered designs, the Baekum Series ensures enhanced organization and effortless accessibility.





Premium **pantry** storage for modern kitchens.

Engineered with premium stainless steel construction, the Baekum series offers elegant storage solutions, smooth accessibility, and long-lasting performance.



STAINLESS STEEL
DISH RACK



DIAMOND PANTRY
PULL OUT



PREMIUM BOTTLE
PULL OUT



MASEOLI TRAY
SOFT CLOSE



MASEOLI MAGIC
SOFT CLOSE

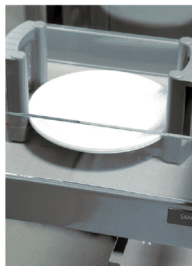


PLATE
RACK



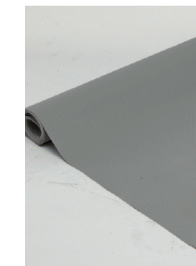
SS
CUTLERY



PULL OUT
WASTE BIN



SWING
TRAY



ECOMAT

ROLLING SHUTTER

Designed to bring functionality and elegance to modern kitchens and workspaces. These shutters offer smooth, space-saving operation that blends seamlessly with contemporary cabinetry. Engineered for durability, ease of use, and a refined modern look, rolling shutters provide an organized and stylish storage solution for today's interiors.





Elegant **shutter** **systems** for modern kitchens.

Engineered for modern cabinetry, our rolling shutters offer smooth vertical movement, space-efficient storage, and elegant functionality.



GLASS
FROSTED



GLASS
BLACK



GLASS
WHITE



PVC
GREY



PVC
SILVER

OSJANG SERIES

Designed to maximize space and simplify your daily routine. Our accessories are built with durable materials and innovative designs that complement the modern lifestyle.





Organized **wardrobe** **systems** for modern lifestyles.

Engineered for modern wardrobes, the Osjang series delivers smart storage solutions, smooth accessibility, and practical organization for everyday use.



JEWELLERY
BOX



TROUSER
RACK



RATTAN
STORAGE BASKET



SHOE
RACK



WARDROBE
LIFT



REVOLVING
SHOE RACK



DIGITAL
LOCKER



PUSH
TO OPEN



SQUARE
WARDROBE TUBE



OVAL
TUBE



OVAL WALL
TO WALL SUPPORT-
ECO CP



OVAL WALL
TO WALL SUPPORT-
STANDARD CP



OVAL WALL
TO WALL SUPPORT-
PREMIUM CP



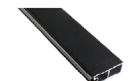
OVAL END
TOP SUPPORT CP



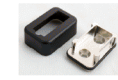
OVAL CENTER
SUPPORT CP



OVAL
SUPPORT TWO
WAY CP



RECTANGULAR
WARDROBE TUBE



RECTANGULAR
SUPPORT WALL TO
WALL PREMIUM



RECTANGULAR
END TOP
SUPPORT



RECTANGULAR
CENTER WARDROBE



RECTANGULAR
TWO WAY SUPPORT

POCKET SLIDE

Designed for smooth and space-saving functionality, Slides ensure effortless drawer movement with a sleek, concealed mechanism. Engineered for durability and precision, they provide stable performance, easy installation, and a clean aesthetic, making them the perfect choice for modern furniture solutions.





Space-saving **pocket slide** solutions for modern cabinetry.

Designed for modern cabinetry, pocket slide systems provide smooth door movement, concealed storage, and efficient space utilization.



POCKET
SLIDE

LIFT-UP FITTINGS

Designed for smooth, space-efficient overhead storage, enable effortless upward opening with a controlled folding motion. Engineered with adjustable force and opening angles, they ensure stable performance across varying door sizes and weights. The precision-built mechanism delivers quiet, balanced movement, easy installation, and long-term durability, making it an ideal solution for modern modular kitchens and overhead cabinets.





Smart **lift-up** solutions for modern cabinetry.

Engineered with advanced lift-up technology, our fittings ensure smooth upward door movement, stable performance, and effortless access to overhead cabinets.



BI-FOLD
LIFT UP

ALUMINIUM PROFILE

Crafted with precision engineering, our aluminium profiles offer the perfect balance of strength, lightweight performance, and corrosion resistance. Designed for versatile applications in modern furniture and interiors, they ensure seamless integration, refined aesthetics, and long-lasting durability for contemporary cabinetry and architectural solutions.

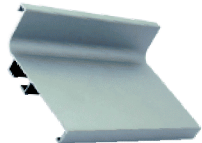


Precision aluminium profiles for modern interiors.

Crafted with precision engineering, our aluminium profiles provide strength, durability, and a sleek modern finish for contemporary wardrobes and interiors.



F
PROFILE



J GOLA
PROFILE



C GOLA
PROFILE



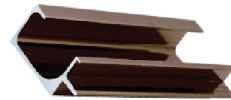
L
PROFILE



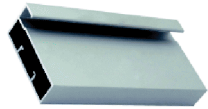
22 MM
FRAME



22 MM
F HANDLE



G
PROFILE



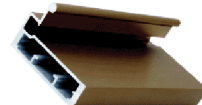
45 MM
FRAME



45 MM
L Handle



50 MM
FRAME



50 MM
I HANDLE



45 MM
I HANDLE



J
PROFILE



55 MM CURVED
FRAME PROFILE



HANDLE FOR 55 MM
CURVED FRAME PROFILE



FRAME PROFILE
CONNECTOR



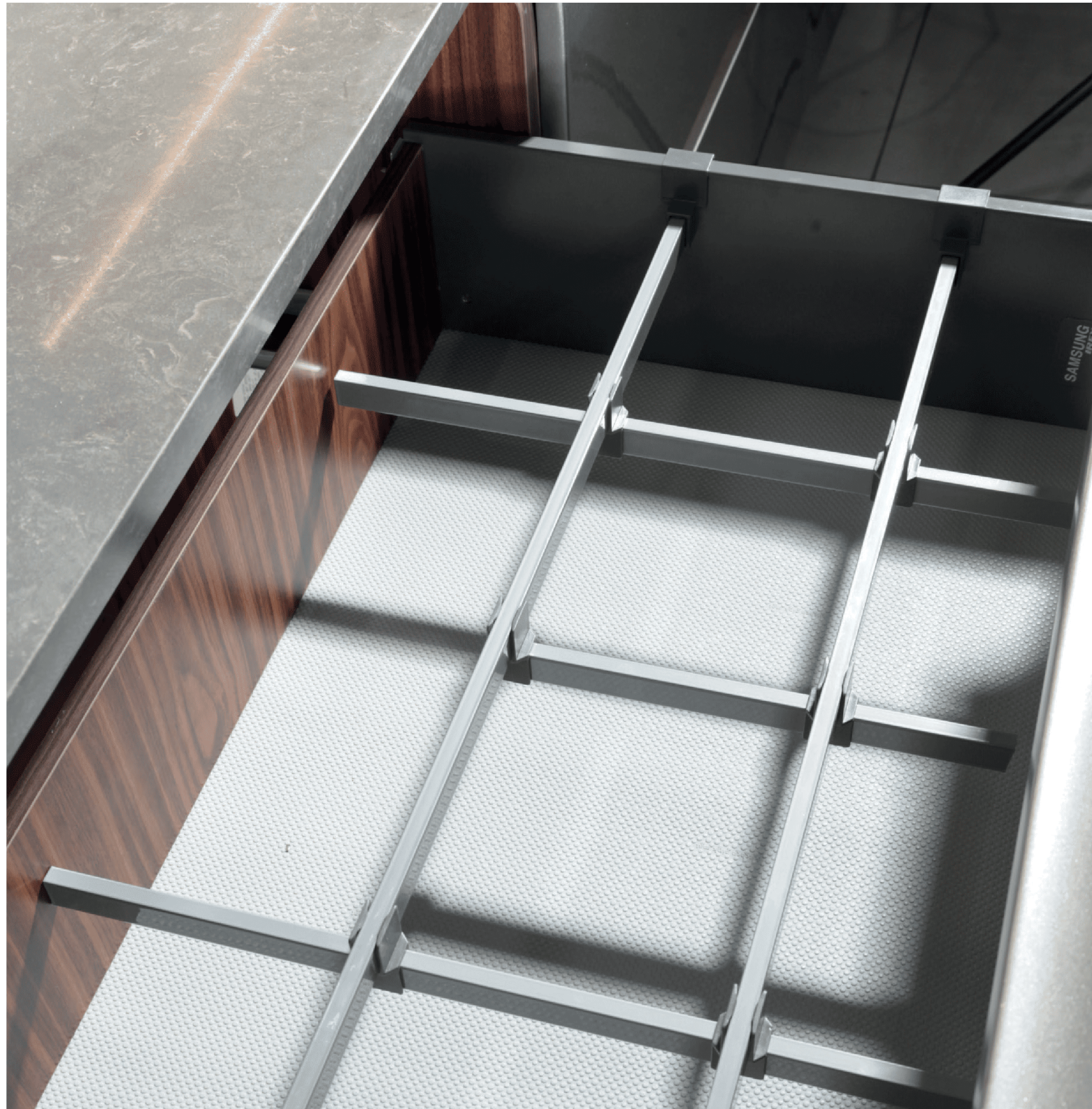
GOLA PROFILE
CONNECTOR



22 MM PROFILE
CONNECTOR

INTERNAL ACCESSORIES

Designed to enhance organization and functionality, our internal accessories bring efficiency and elegance to modern kitchens, wardrobes, and living spaces. Thoughtfully engineered with innovative design and superior quality, each accessory ensures seamless storage, easy accessibility, and long-lasting durability, helping your spaces remain organized, stylish, and practical for years to come.



Functional **internal accessories** for organized spaces.

Crafted with durable materials and intelligent design, our internal accessories enhance organization, accessibility, and efficiency in modern living spaces.



SINGLE CROSS
RAIL CONNECTION



DIVIDER
RAIL CONNECTION



HORIZONTAL
RAIL



VERTICAL
RAIL



GLASS SIDE FRONT
CONNECTOR CLIP



GLASS SIDE
ADAPTER FRONT-GALLERY



GLASS SIDE
ADAPTER BACK-GALLERY



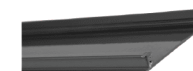
GLASS SIDE
ADAPTER FRONT-
DOUBLE GALLERY



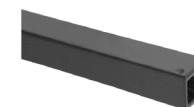
GLASS SIDE
ADAPTER BACK-
DOUBLE GALLERY



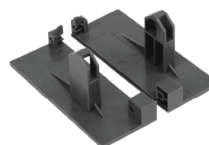
FRONT GLASS
BRACKET-DOUBLE
GALLERY



ALUMINIUM FRONT
HANDLE PROFILE 1100 MM



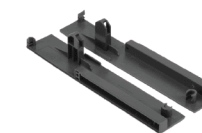
SQUARE ROD
FRONT HANDLE 1100 MM



FRONT BRACKET
NORMAL DRAWER



FRONT BRACKET
SINGLE GALLERY DRAWER



FRONT BRACKET
DOUBLE GALLERY DRAWER

GENERAL HARDWARE

Engineered with precision and built for durability, each product ensures seamless installation, reliable performance, and long-lasting support for various furniture and interior applications.



Essential hardware solutions for modern interiors.

Crafted with durable materials and intelligent design, our internal accessories enhance organization, accessibility, and efficiency in modern living spaces.



BUTT HINGES
WITH BEARING



BUTT HINGES
WITHOUT BEARING



BED
FITTING



MULTIPURPOSE
LOCK



WARDROBE
LOCK



MAGNETIC
CATCHER



SHELF
SUPPORT



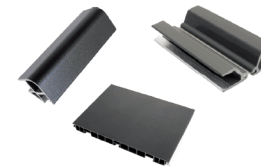
PVC
LEG



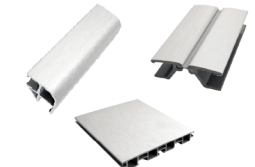
CONNECTING
FITTINGS



GAS SHOCK
ABSORBER



PLINTH-
BLACK



PLINTH-
SILVER

One of the Leading Manufacturers of Premium Furniture Fitting Hardware.

with 45+ years of legacy.



Connect with us

 /samsung.irex

 1800 1204 920

 samsungirexindia.com

 care@samsungirexindia.com

Global HQ

Samsung Precision Ind. Co. Ltd.

Incheon, Seoul, South Korea 167, Bongsu-daero, Seo-gu Incheon-Seoul,
South Korea

India

Samsung Irex India LLP

F-02, Unit 11 & 12, Emaar- The Palm Square, Golf Course Extension Road
Gurugram, Haryana - 122101

Warehouse

Samsung Irex India LLP

Shed No. 4, DRS Warehousing, Village: Khijuri,
NH – 48, Tehsil: Dharuhera; District: Rewari, Haryana - 123401

Display Center

Amritsar | Bangalore | Delhi | Deoria | Faridabad | Gurugram | Guwahati |
Hyderabad | Kathua | Katni | Kathua | Lucknow | Noida | Patiala | Ranchi

UAE

Amigos Aesthetic Building Materials Trading LLC Dubai Investment
Park 2 Plot no. 597-4232, P. O. Box 299842, Dubai

The fitting situations shown in this catalogue are only intended to illustrate the possible options.

The furniture manufacturer is responsible for ensuring that furniture is designed in compliance with standards, in particular with regard to meeting the requirements on safety.

We will be pleased to provide any further information you may require.

We reserve all rights to this catalogue under copyright law. It shall not be permissible to duplicate this catalogue in any form either in whole or in part without our written consent. Subject to technical alterations. Errors and omissions excepted. Subject to colour variations.