



KUM SERIES

Bottle Pull Out | Pantry | Corner Solutions



ENGINEERED IN KOREA

KUM SERIES

GLASS BOTTLE PULL OUT



Features

- Available in 2 Layers.
- Weight carrying capacity: 5 kg. Max 2.5 kg per basket recommended.
- Finish: Grey

ARTICLE CODE	CABINET SIZE (mm)	PRODUCT SIZE (mm)	QTY.	UNIT	PU
3050200 (Left) 3051200 (Right)	200	160 x 485 x 495	1	Set	1
3050250 (Left) 3051250 (Right)	250	210 x 485 x 495	1	Set	1
3051300 (Left) 3051300 (Right)	300	260 x 485 x 495	1	Set	1

KUM SERIES

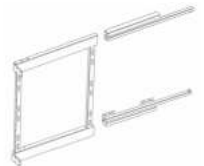
TANDEM BOTTLE PULL OUT



Features

- Frame Material: MS with powder coating.
- Available in 2 Layers.
- Weight carrying capacity: 5 kg. Max 2.5 kg per basket recommended.
- Finish: Grey

Firstly unscrew channel with Frame



Flip the frame and remove screw



Fix Shutter into Frame with screw and tighten



ARTICLE CODE	CABINET SIZE (mm)	PRODUCT SIZE (mm)	QTY.	UNIT	PU
3070200(Left) 3071200(Right)	200	160 x 485 x 495	1	Set	1
3070250 (Left) 3071250 (Right)	250	210 x 485 x 495	1	Set	1
3070300 (Left) 3071300 (Right)	300	260 x 485 x 495	1	Set	1

KUM SERIES

GLASS PANTRY PULL OUT



Features

- The front shelf swings opens with the door and rear shelf is automatically drawn forward.
- Baskets can be adjusted up & down.
- Seamless motion and soft-close opening.
- Finish: Grey
- 6 layered system.

ARTICLE CODE	CABINET SIZE (mm)	PRODUCT SIZE (mm)	QTY.	UNIT	PU
3060450	450	380 x 510 x 1820	1	Set	1
3060600	600	480 x 510 x 1820	1	Set	1

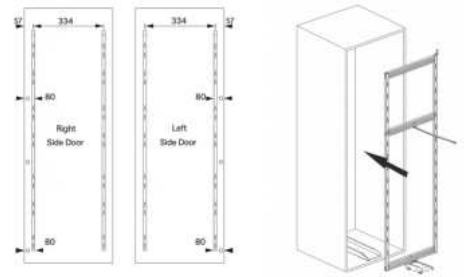
KUM SERIES

TANDEM PANTRY PULL OUT



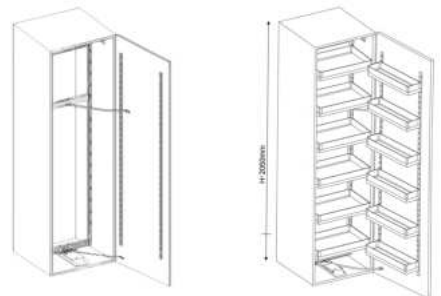
Features

- Tandem Pantry Unit – Aluminium.
- Frame Material: MS with powder coating.
- The front shelf swings open with the door and rear shelf is automatically drawn forward.
- Baskets can be adjusted up & down.
- Seamless motion and soft-close opening.
- Finish: Grey.
- 6 layered system.



After fitting all parts check working

Fix baskets according to your need



ARTICLE CODE	CABINET SIZE (mm)	PRODUCT SIZE (mm)	QTY.	UNIT	PU
3080450	450	380 x 510 x 1820	1	Set	1
3080600	600	480 x 510 x 1820	1	Set	1

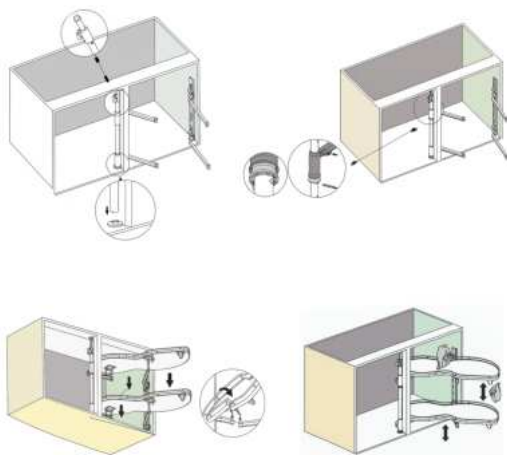
KUM SERIES

SWING TRAY- CORNER SOLUTION



Features

- Number of layers: 2.
- Eco-friendly, space-saving and convenient.
- Door opening minimum space: 450 mm.
- Weight carrying capacity: 7.5 kg per single tray recommended.
- Soft-close opening.
- Finish: Grey



ARTICLE CODE	DESCRIPTION	QTY.	UNIT	PU
3091450	Swing Tray - Left	1	Set	1
3092450	Swing Tray - Right	1	Set	1

KUM SERIES

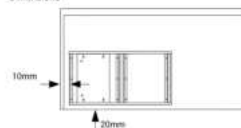
MAGIC CORNER- CORNER SOLUTION



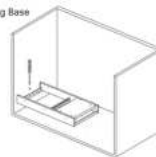
Features

- Frame Material: MS with powder coating
- This elegant corner brings a sleek look.
- Door opening minimum space: 450 mm.
- Weight carrying capacity: 16 kg, max 4 kg per basket recommended.
- Seamless motion and Soft closing.
- Finish: Grey

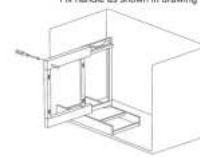
Place Bottom Base As Given Dimensions



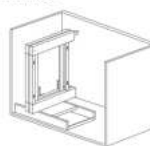
Fix Sliding Base



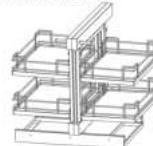
Fix handle as shown in drawing



Place frame on bottom base and fix with bolt



Hang baskets with hook, Final movement check



ARTICLE CODE	DESCRIPTION	QTY.	UNIT	PU
3093450	Magic Corner - Glass	1	Set	1
3094450	Magic Corner - Tandem	1	Set	1

KNOW MORE



VISIT US

Global HQ

Samsung Precision Ind. Co. Ltd.
Incheon, Seoul, South Korea 167,
Bongsu-daero, Seo-gu
Incheon-Seoul, South Korea

India HQ

F-02, Unit 11 & 12,
Emaar - The Palm Square
Golf Course Extn. Road
Gurugram, Haryana

India Experience Centers

Amritsar | Bangalore | Chennai | Delhi | Deoria | Faridabad |
Gurugram | Guwahati | Hyderabad | Karur | Kathua | Katni |
Lucknow | Noida | Patiala | Raipur | Ranchi

Connect With Us